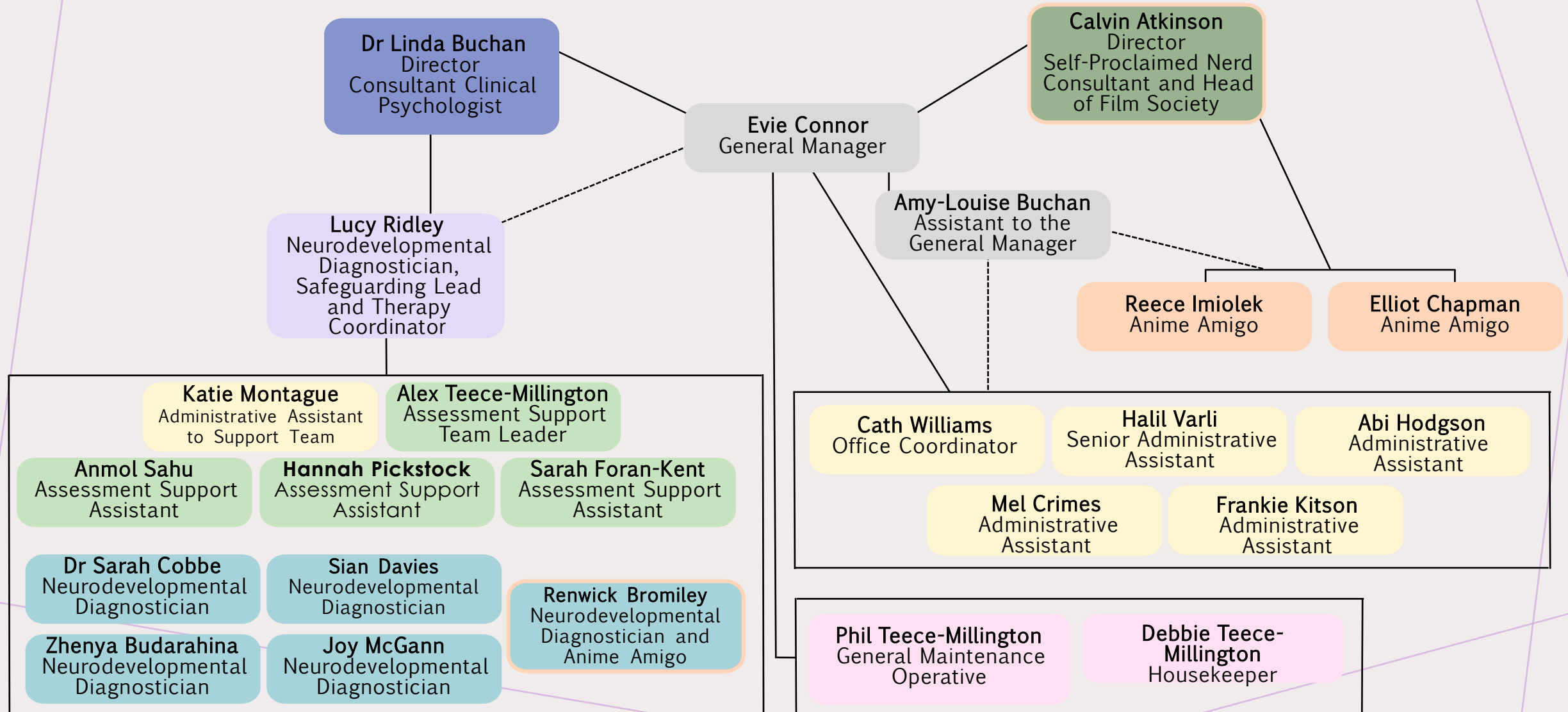


---

**PDSG 19th November**

*@xia*

# ORGANISATIONAL CHART



# How is Axia different?

---

- Offer face to face appointments
- Not using AI for report writing.
- Offer a Post-Diagnostic Support group

@xia



# THE PAST 12 MONTHS IN NUMBERS

---

1882  
assessments

113  
post diagnostic  
support sessions

96  
DHQ calls

9  
PDSGs

9  
Anime Amigos  
podcasts

104  
Anime Amigos  
streams

8  
Diagnosticians'  
Huddles

25  
Axia Collective  
meetings

# KEY EVENTS

---

Training events

Conference  
attendance

Sponsorships

Ongoing  
Shropshire work

New staff

Changes at  
Brookside

# THE CABIN

---



# STAFF ROOM / FRANCE

---



# ASSESSMENT SUPPORT TEAM OFFICE

---



# ADMIN OFFICE

---



# GENDER AFFIRMING CARE



# INTRODUCTION

Following on from the CASS review which was published in April 2024 recommendation 2 was: Clinicians should apply the assessment framework developed by the Review's Clinical Expert Group, to ensure children/young people referred to NHS gender services receive a holistic assessment of their needs to inform an individualised care plan. This should include screening for neurodevelopmental conditions, including Autism Spectrum Disorder, and a Mental Health assessment. The framework should be kept under review and evolve to reflect emerging evidence. This has prompted us to do some further research and find out how we can help members of this community get the further care they need and deserve.

# COMMON WORDS AND THEIR DEFINITIONS

## GENDER DYSPHORIA

- Used to describe when a person experiences discomfort or distress because there is a mismatch between their sex assigned at birth and their gender identity. This is also the clinical diagnosis for someone who doesn't feel comfortable with the sex they were assigned at birth.

## GENDER AFFIRMING CARE

- Gender-affirmative health care can include any single or combination of a number of social, psychological, behavioural or medical (including hormonal treatment or surgery) interventions designed to support and affirm an individual's gender identity.

## GENDER INCONGRUENCE

- Diagnostic term used by health professionals, found in ICD-11. Gender incongruence is characterised by “a marked and persistent incongruence between an individual's experienced gender and the assigned sex”.

# COMMON WORDS AND THEIR DEFINITIONS

## TRANSITIONING

- The steps a trans person may take to live in the gender with which they identify. Each person's transition will involve different things. For some this involves medical intervention, such as hormone therapy and surgeries, but not all trans people want or are able to have this.
- Transitioning also might involve things such as telling friends and family, dressing differently and changing official documents.

## GENDER REASSIGNMENT

- Another way of describing a person's transition. To undergo gender reassignment usually means to undergo some sort of medical intervention, but it can also mean changing names, pronouns, dressing differently and living in their self-identified gender.
- Gender reassignment is a characteristic that is protected by the Equality Act 2010, and it is further interpreted in the Equality Act 2010 approved code of practice.

## GENDER CLINICS

- Often known as 'gender identity clinics' (GICs) or "gender dysphoria clinics' (GDCs), which offer formal diagnosis, psychological support, speech therapy, and access to other services like hormone medications and surgeries.

# ASD AND GENDER DYSPHORIA: RESEARCH AND STATISTICS

- Literature on Autism and Gender Dysphoria has increased in the last seven years. However, when I was reading through this a lot of the researchers had used out of date terms and overall did not seem to have much knowledge on Autism or Gender Dysphoria.
- Early studies revealed that Autistic individuals report higher rates of gender diversity than the non-autistic population. Consequently, autistic individuals also experience lower identification and fewer positive feelings about assigned gender groups which can lead to Gender Dysphoria. This is especially true for those assigned female at birth. Research shows Autism is found more often in transgender people at around 6–26% compared to about 2% in the general population.
- We still don't really know why there is a high co-occurrence,. Scientists have suggested biological, psychological, and social reasons, but none have strong evidence yet. A 2022 review found 15 different theories about the connection, but none were well supported by research. So far, only two long-term studies have looked at how Autism and Gender Dysphoria overlap.

# OUR INVOLVEMENT AT AXIA



# BEFORE THE ASSESSMENT

- Cath will receive the referral from the Gender Clinic, GP or Mental Health Service.
- She will screen the referral, if the referral states MX as the guests title (gender neutral title used instead of Mr, Mrs etc), Gender Dysphoria in the medical history, or has come direct from the Gender clinic this will be classed as a 'CASS referral'
- Once the appointment has been booked Cath will add the referral along with the questions and the disclaimer for the report to the guests file and notify Linda and the clinician.
- Clinicians are welcome to meet with Linda before the assessment to get further understanding etc

# DURING THE ASSESSMENT

- Ascertain they are truly consenting to the assessment perhaps spend more time on this than usual, do not continue if you doubt they are consenting.
- Ask them if they have been given any information as to the impact of receiving or not receiving a diagnosis on their gender treatment.
- Explain a member of our support team will be contacting them in an agreed time to ascertain how they are feeling about the diagnosis/assessment.
- For referrals that are not directly from the gender clinic the questions do not need to be asked, just add the disclaimer to the report in case the guest requires gender clinic input in the future.

# AFTER THE ASSESSMENT

- Add disclaimer 'This guests gender identity is not affected by this assessment. Axia ASD Ltd are extremely clear that this report must not be used to deny this individual gender affirming care or gender confirmation surgery under any circumstances.' to the report.
- Notify a member of the support team so they are aware they need to contact the guest.
- Support team to follow up with the guest, particularly if the diagnosis has had any impact on their gender clinic appointments.

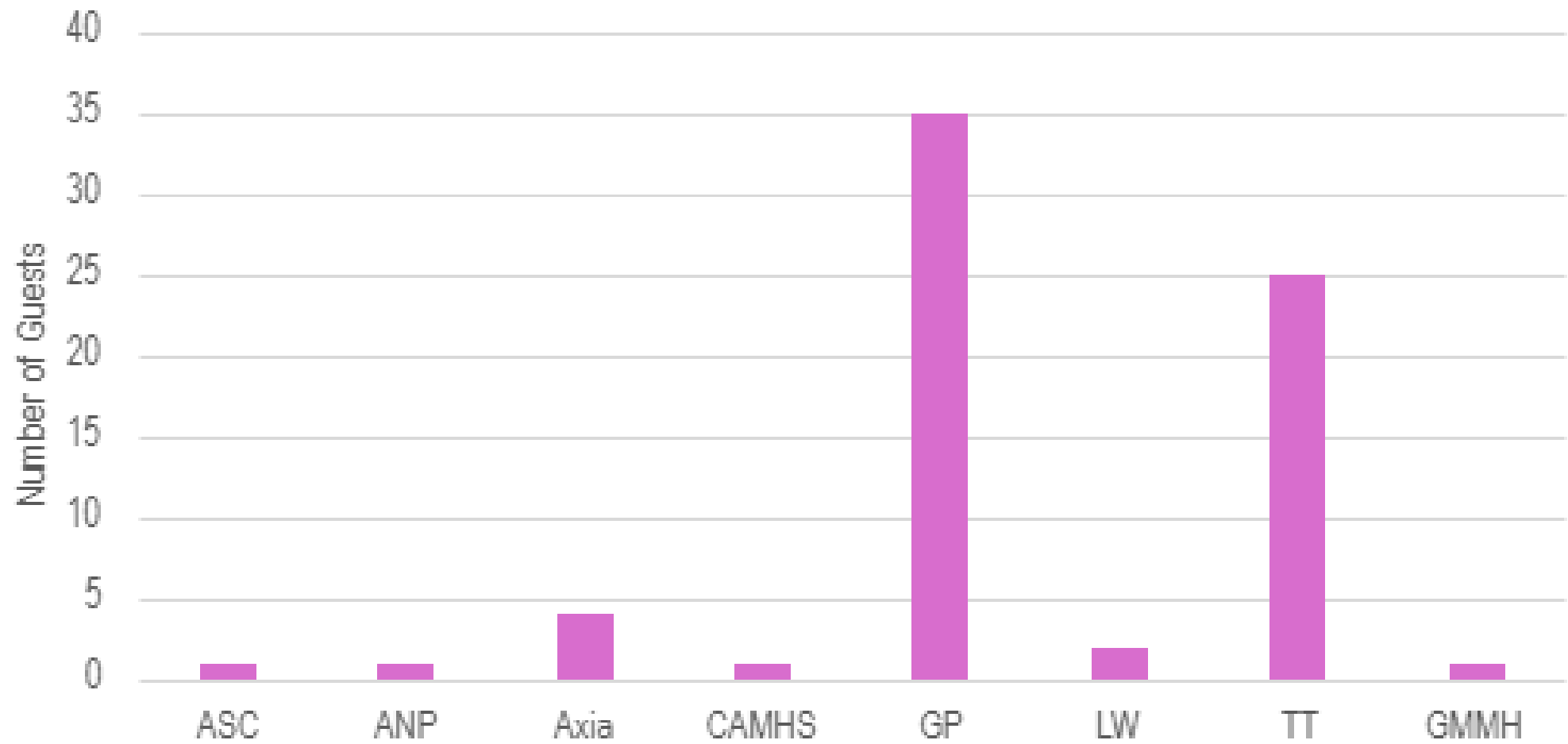
# SALFORD POST DIAGNOSTIC SUPPORT

Lucy Ridley

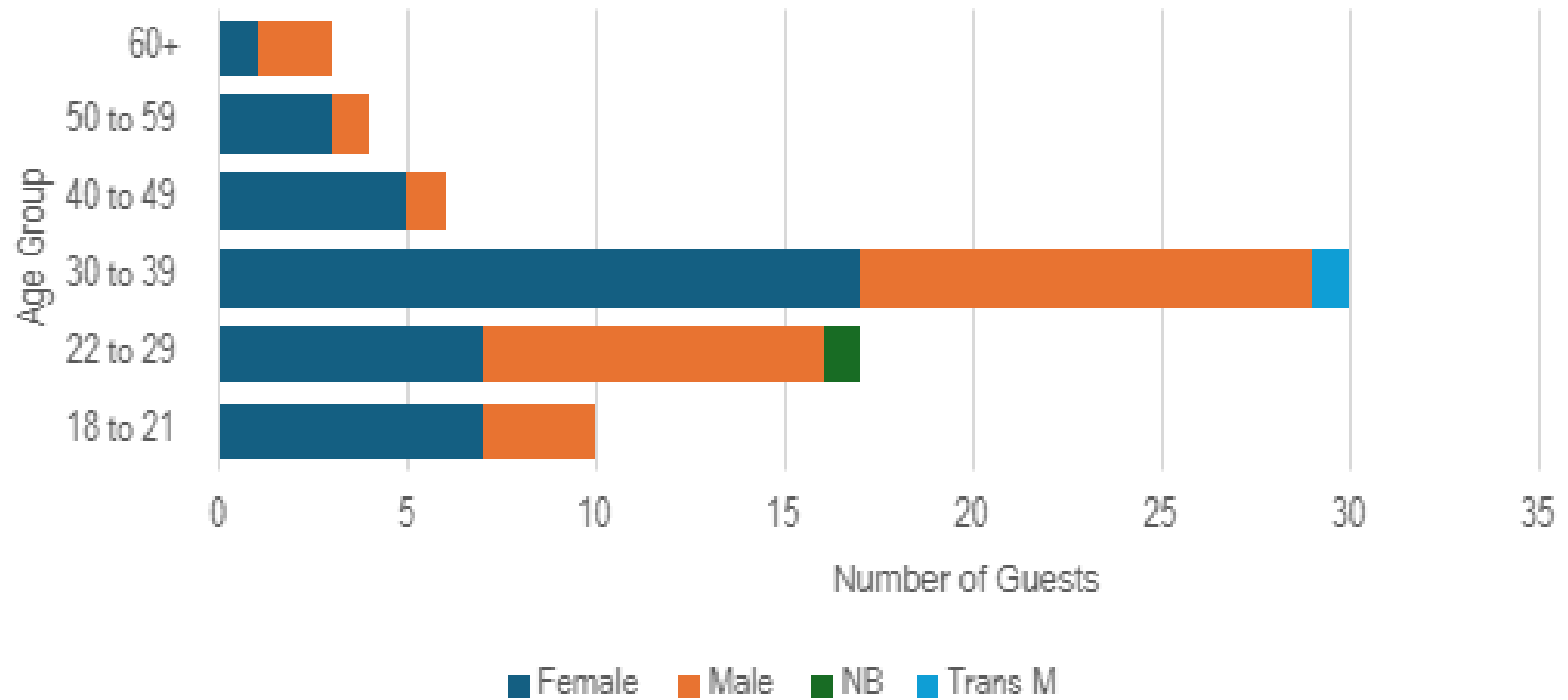
Axia ASD

November 2025

## Referral sources



## Referrals by 'Age Group' and 'Gender'

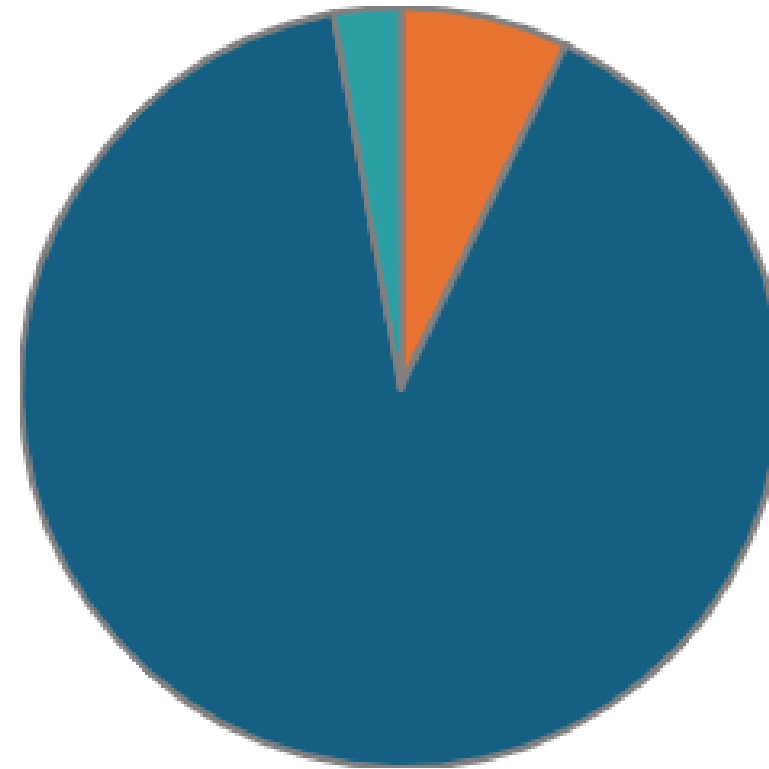


5 out of the 70 guests spoke English as a second language which further adds to the complexity of communication for autistic people and the nuances of language.

Additionally, people do not always want a translator as it means sharing private information with someone from their community.

This is another reasonable adjustment we accommodate by, for example, allowing extra time.

English as Second Language



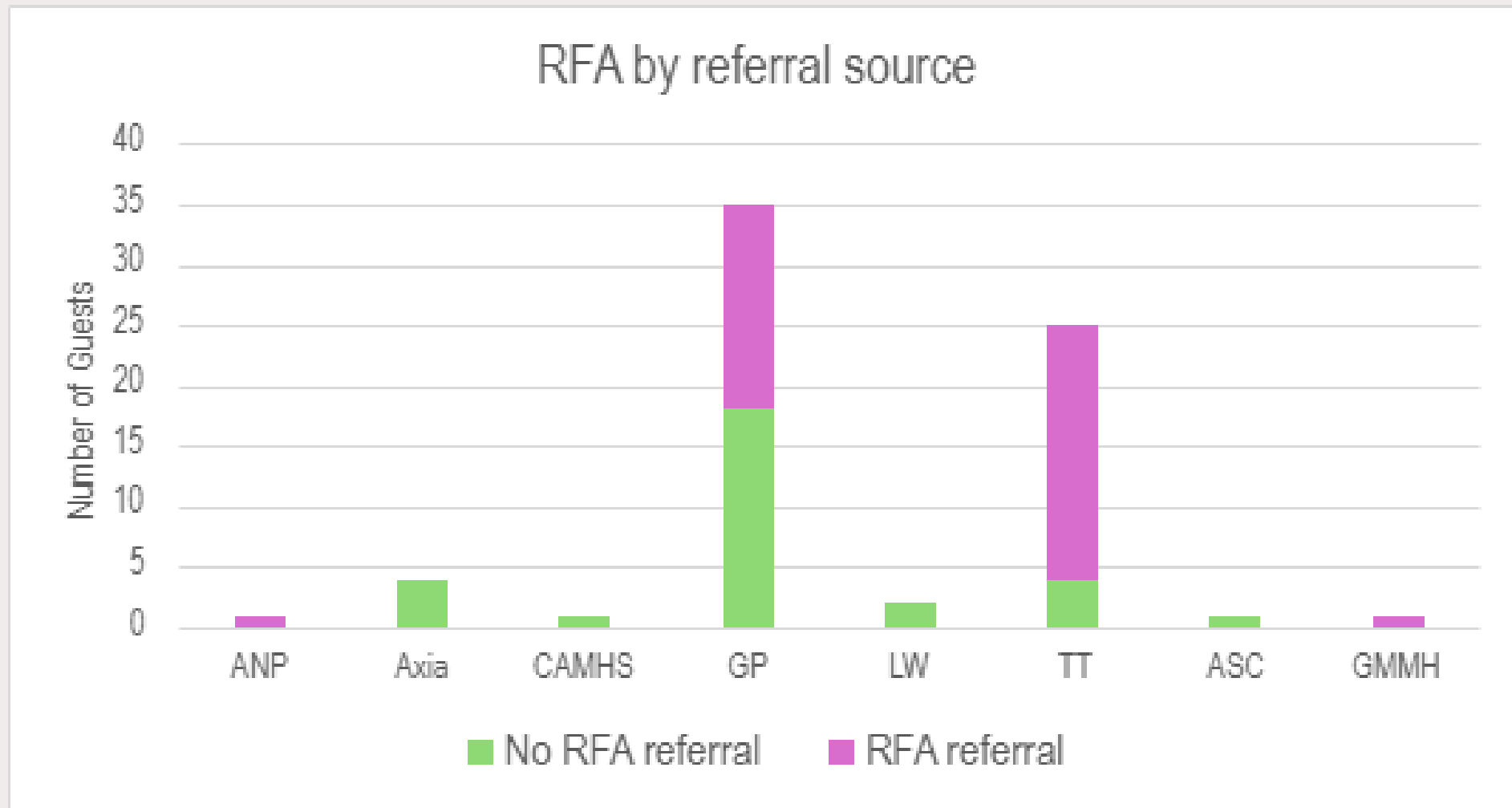
Yes No (blank)

## PDSG

All of the guests are invited to our Post Diagnostic Support Group (PDSG). It has been a pleasure to see an increase of guests from Salford in attendance, however, as Chester is not accessible for everyone (due to expense, difficulty in accessing public transport due to anxiety, length of time of the journey, time of day etc.) however, as you know our presentations are always recorded and uploaded to our website.

I often recommend: <https://axia-asd.co.uk/october-pdsg-presentation-after-the-diagnosis-with-dr-linda-buchan/> which clearly explains therapy is about change and that people cannot change their neurodivergence but rather adjust to it.





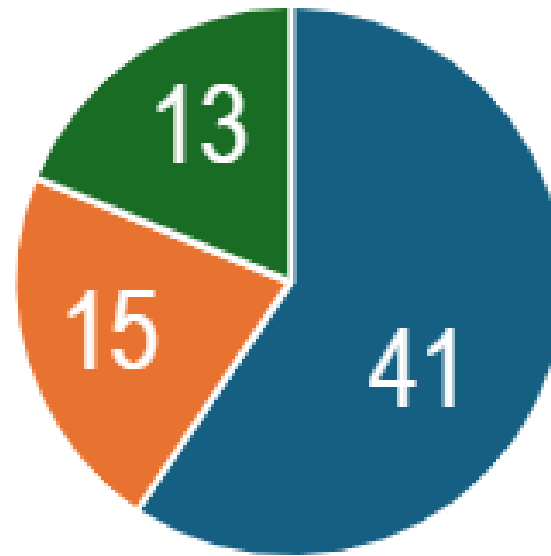
40 guests in total were 'Respect for All' diversions

## Respect for All diversions...

We are providing 1:1 post diagnostic support sessions for those we have assessed as clearly in need of it. Of the 40 RFA diversion referrals, 27 people were referred to our PDSG and local services such as Salford Employment Service, Salford CVS, Salford Welfare Rights, Breakthrough UK, Salford Autism and You Can. 8 people were allocated six x 1:1 post diagnostic support sessions.

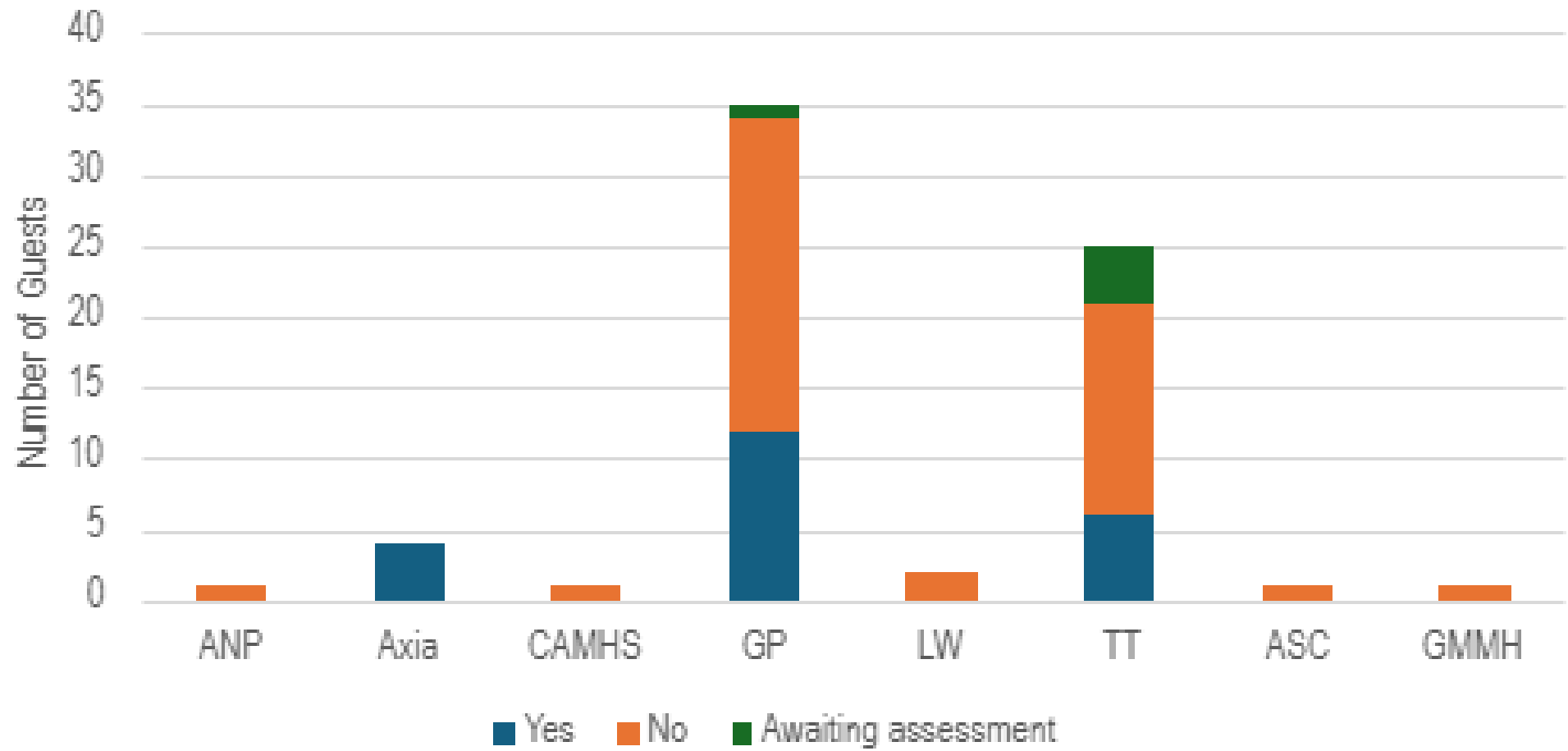
There are a significant proportion of our post diagnostic support guests who are both Autistic and ADHD or waiting for an ADHD assessment. Some common themes came through, which we highlighted in our January PDSG presentation: <https://axia-asd.co.uk/january-pdsg-presentation-with-dr-linda-buchan-lucy-ridely-when-autism-and-adhd-collide/>

## Autism with ADHD diagnosis

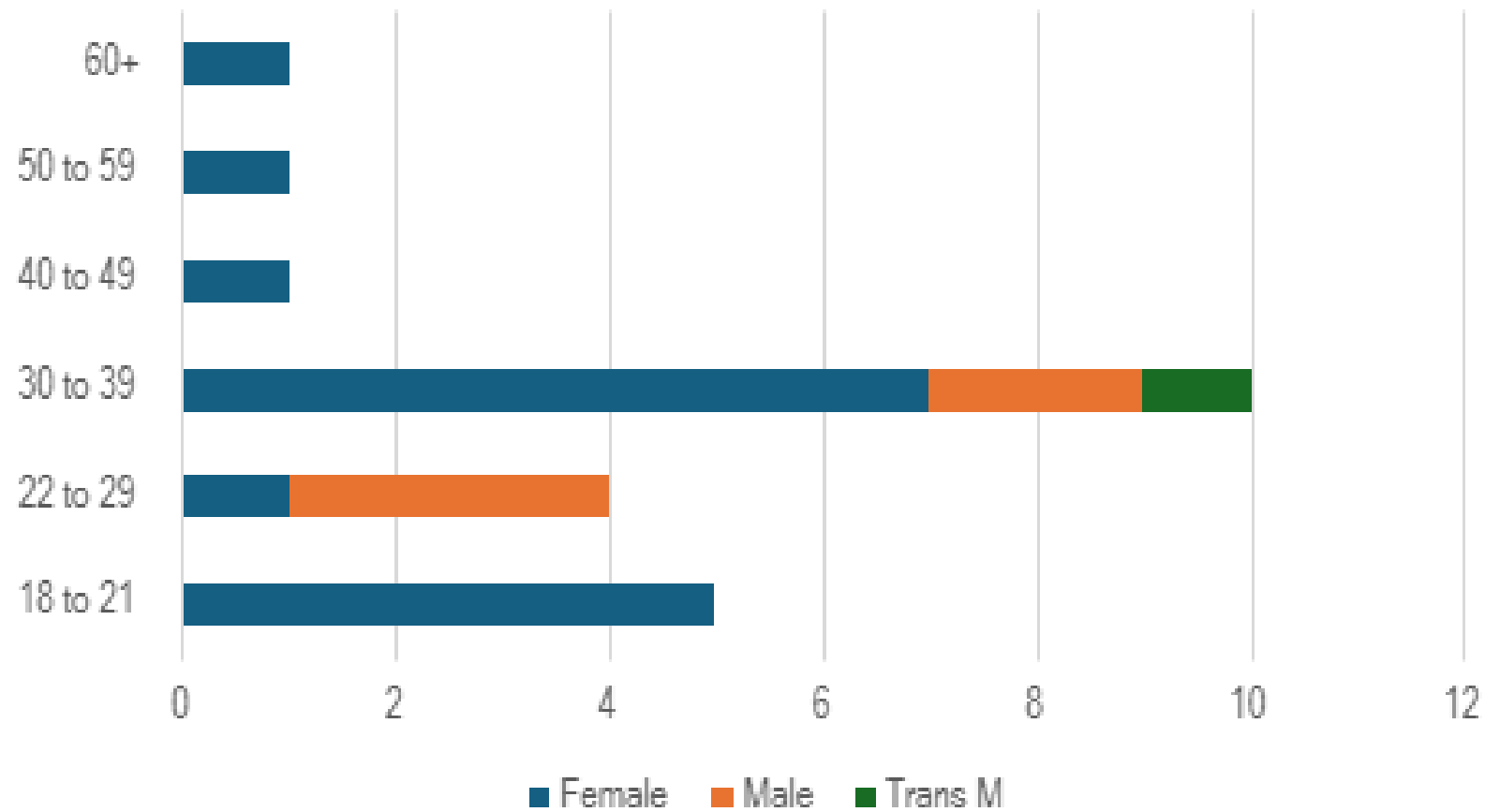


- Autistic
- Autistic & ADHD
- Autistic & waiting for ADHD assessment

## PDS offered



## PDS Offered by Age and Gender



# THANK YOU ALL FOR BEING FABULOUS!

Lucy Ridley  
Axia ASD

# What's next for Axia?

---

Watch this space!

@xia



# Axia “After the Diagnosis” presentation

---

Available to watch on Axia ASD's Youtube channel here: [Axia PDSG 2nd October 2024 - YouTube](#)

The logo for Axia, featuring a stylized '@' symbol in green followed by the word 'xia' in a purple serif font.